

TTP-245C Battery Replacement

Replacing the CR2032 Real-Time Clock Battery

This guide walks you through replacing the CR2032 real-time clock battery on a TTP-245C chassis. The battery sits on the main circuit board and reaching it requires partial disassembly of the printer. Allow approximately 30 minutes and work methodically — there are several small fasteners to keep track of.

EQUIPMENT YOU WILL NEED

- Small flat-head screwdriver
- Standard Phillips screwdriver

STEP 1 Disconnect power and USB

Disconnect the printer from its power source and remove the USB cable. Work on a clean, well-lit surface.

STEP 2 Remove the SD card

If an SD card is fitted in the side port, remove it now and set it aside.

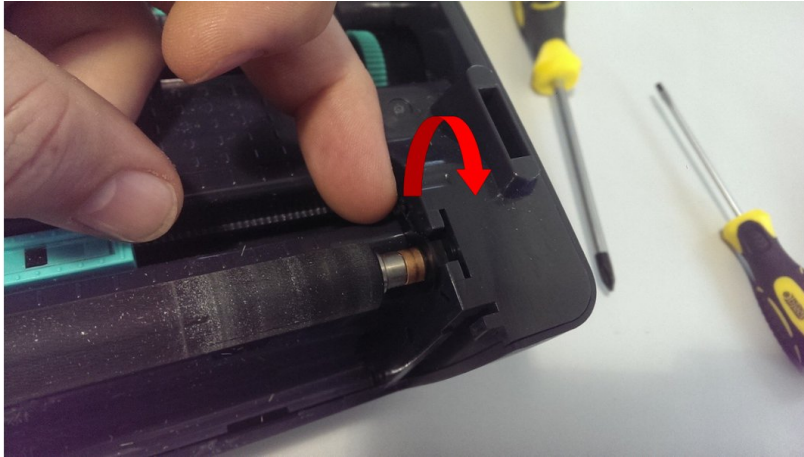
STEP 3 Remove the front blanking plate

Remove the front blanking plate to expose the roller and cog assembly inside.



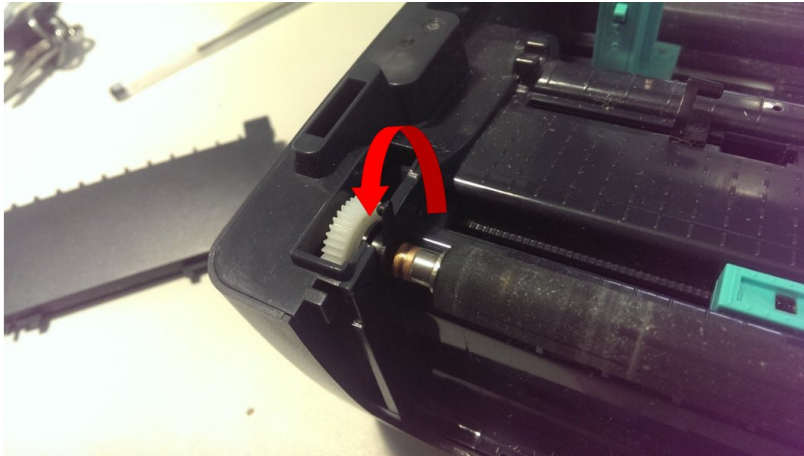
STEP 4 Release the roller retaining clip

Place your nail under the black roller retaining clip and pull the clip upwards (see arrow).



STEP 5 Repeat on the other side and remove the roller assembly

Repeat on the other side, then remove the roller/cog assembly completely.



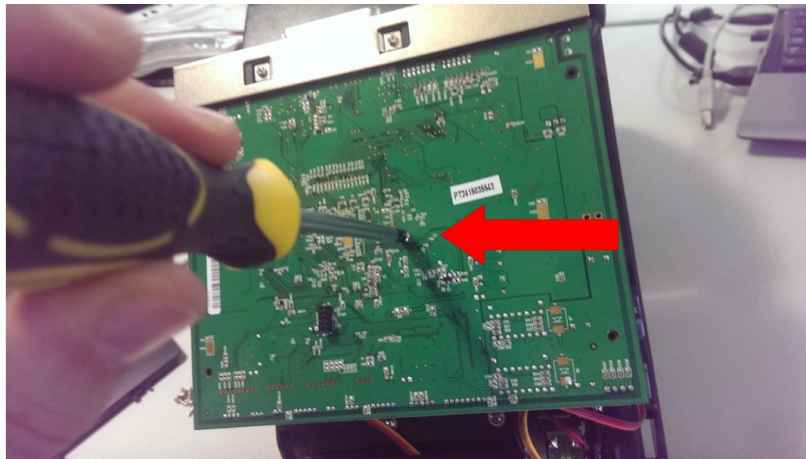
STEP 6 Unscrew the six base screws

Turn the printer over and unscrew the six screw points on the base of the printer (see arrows). Remove the base of the clamshell.



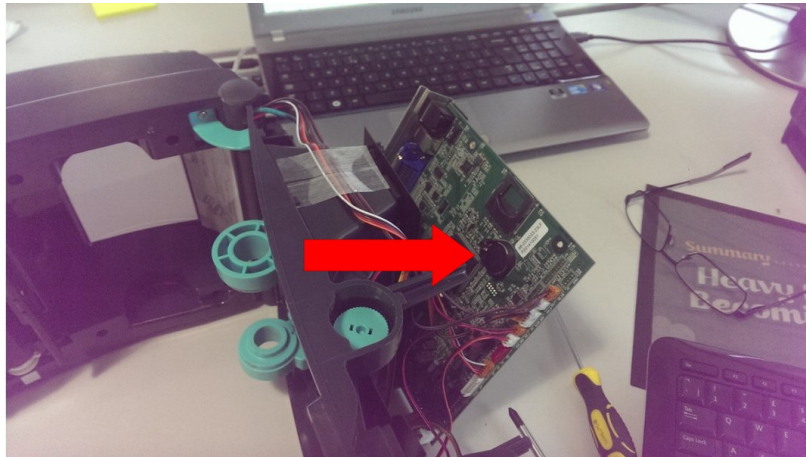
STEP 7 Unscrew the circuit board retaining screw

Locate the circuit board retaining screw (see arrow) and unscrew it.



STEP 8 Replace the CR2032 battery

Place the board on its side and use the flat-head screwdriver to lever the CR2032 battery out of its holder (see arrow). Fit the new battery with the correct orientation.



STEP 9 Reassemble in reverse order

Work through steps 7 down to 1 in reverse. Refit the circuit board screw, replace the clamshell base and its six screws, refit the roller assembly on both sides, and refit the front blanking plate.

STEP 10 Refit the clamshell carefully

When refitting the clamshell, it may not sit perfectly at the back on the first attempt.



CRITICAL

DO NOT force the clamshell home. If it is not sitting properly, lift it back off, check for any trapped wiring or misaligned parts, and try again. Forcing the clamshell will crack the case or damage internal components.

AFTER REPLACING THE BATTERY

Power the printer back on and check that the real-time clock holds the correct date and time after a full power cycle. If the date resets every time the printer is unplugged, the new battery is not making good contact — recheck the orientation in the holder.

NEED HELP?

If you run into trouble during disassembly, or the clock will not hold time after fitting a new battery, get in touch. We can talk you through it or arrange a return-to-base repair.

Call 01332 864895 | **Email** support@pid-labelling.co.uk